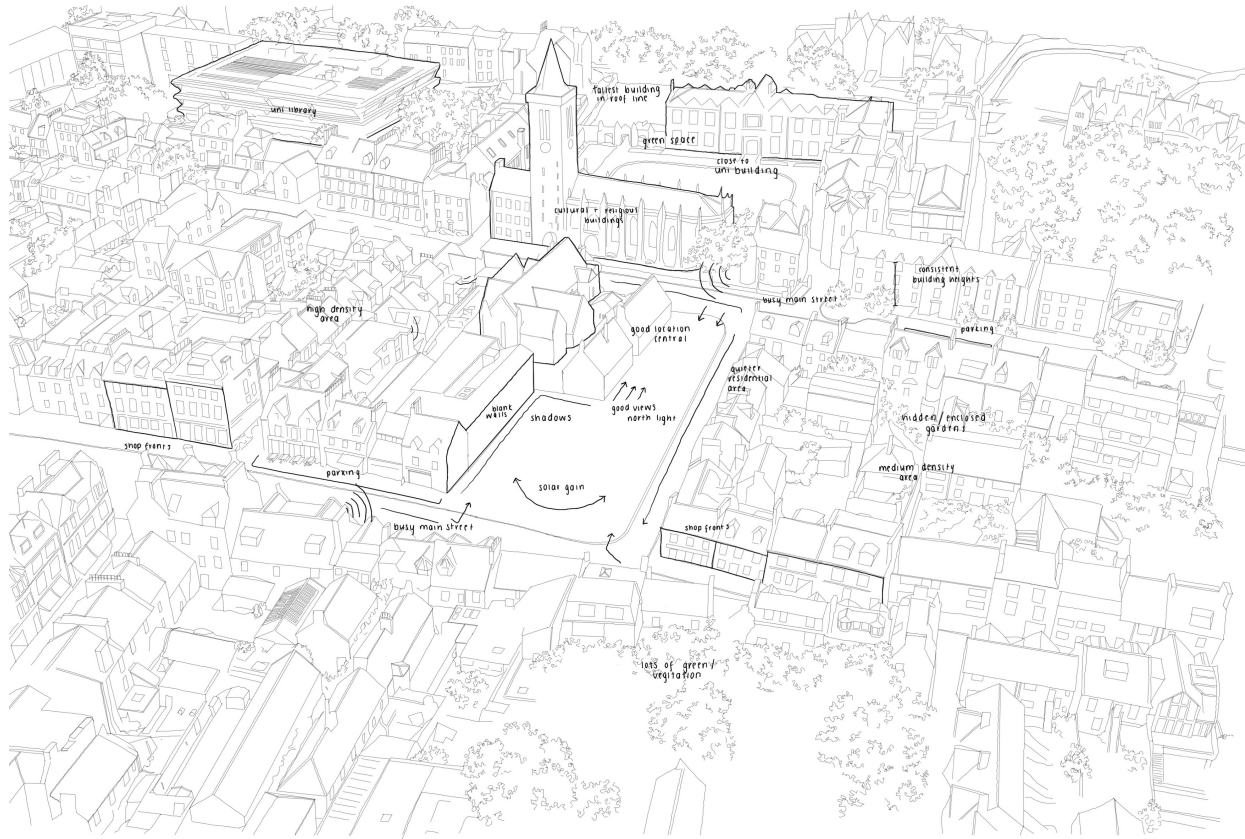




'THE UNION' LIBRARY PROJECT

CAITLIN GRIFFITHS
YEAR 2
UNIVERSITY OF STRATHCLYDE
SEDA CONFERENCE 2023

context



site analysis



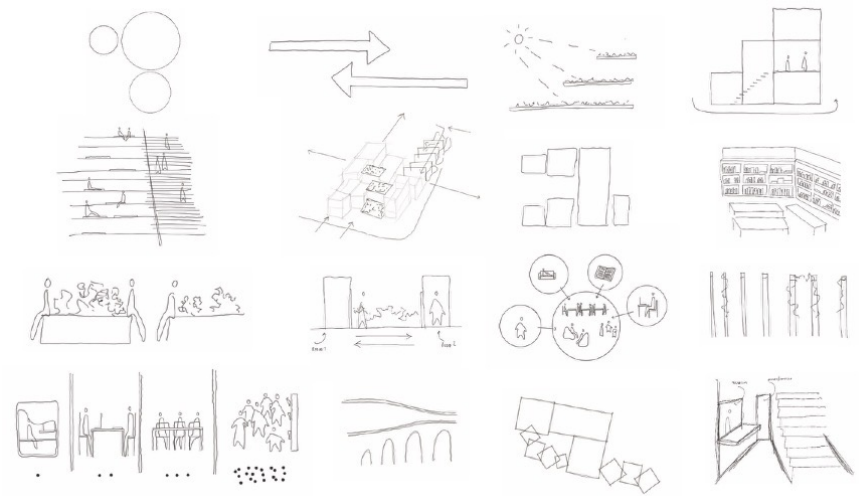
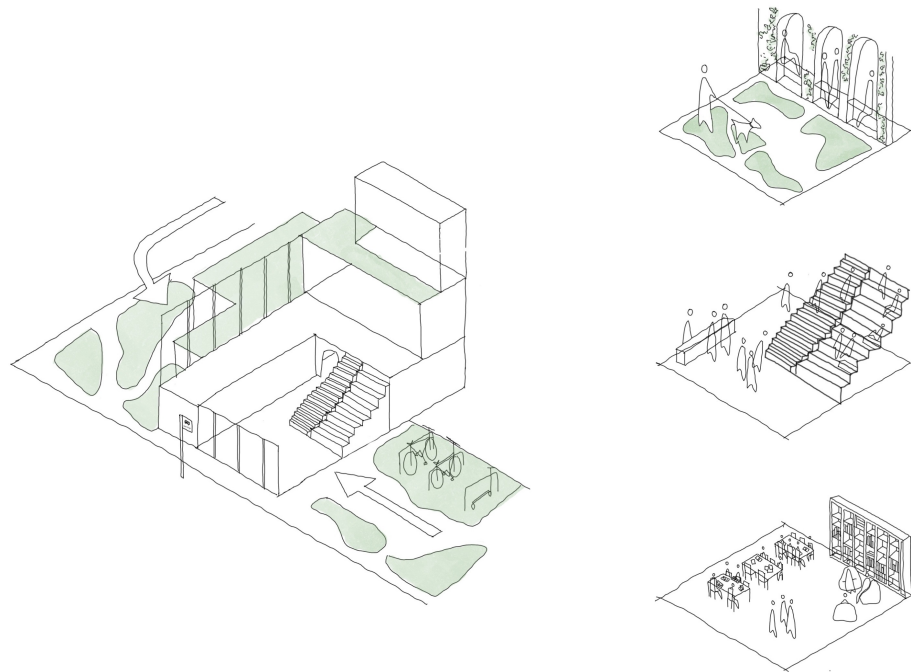
map exploring hidden green spaces



- site response**
- limited open green spaces
 - connection to courtyard for uni
 - busy + noisy street
 - central for uni students
 - residences above shop fronts
 - very close to other buildings
 - varying building heights

- site strategy**
- permeable ground floor
 - build up at the back
 - respect street pattern
 - think about connecting spaces
 - form to allow the most natural light
 - use of height to maximise views

concept



knowledge | community | urban | library | context | sustainability

The initial concept for the design is to incorporate more green spaces into the very urban and commercial market street and incorporate the RIBA sustainable outcomes guide in terms of social sustainability. As the project is 'to share' I wanted the concept for the library to be very targeted towards the community and although the library will mainly be used by university students for reading and studying, I think it was important to consider passers by as it is a very central site. I have chosen to incorporate outdoor seating to encourage people to congregate and socialise outside as well as on the interior. There will be different spaces (both relaxed and formal seating) to allow people to both study privately and with other people.

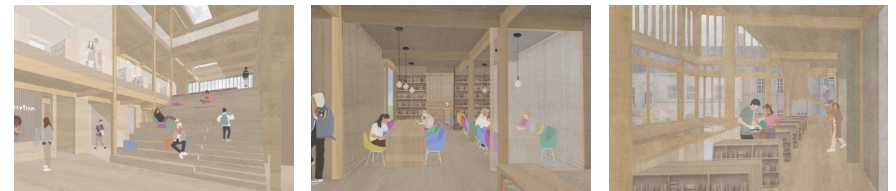


1:500 site plan with roof plan proposal

atmosphere

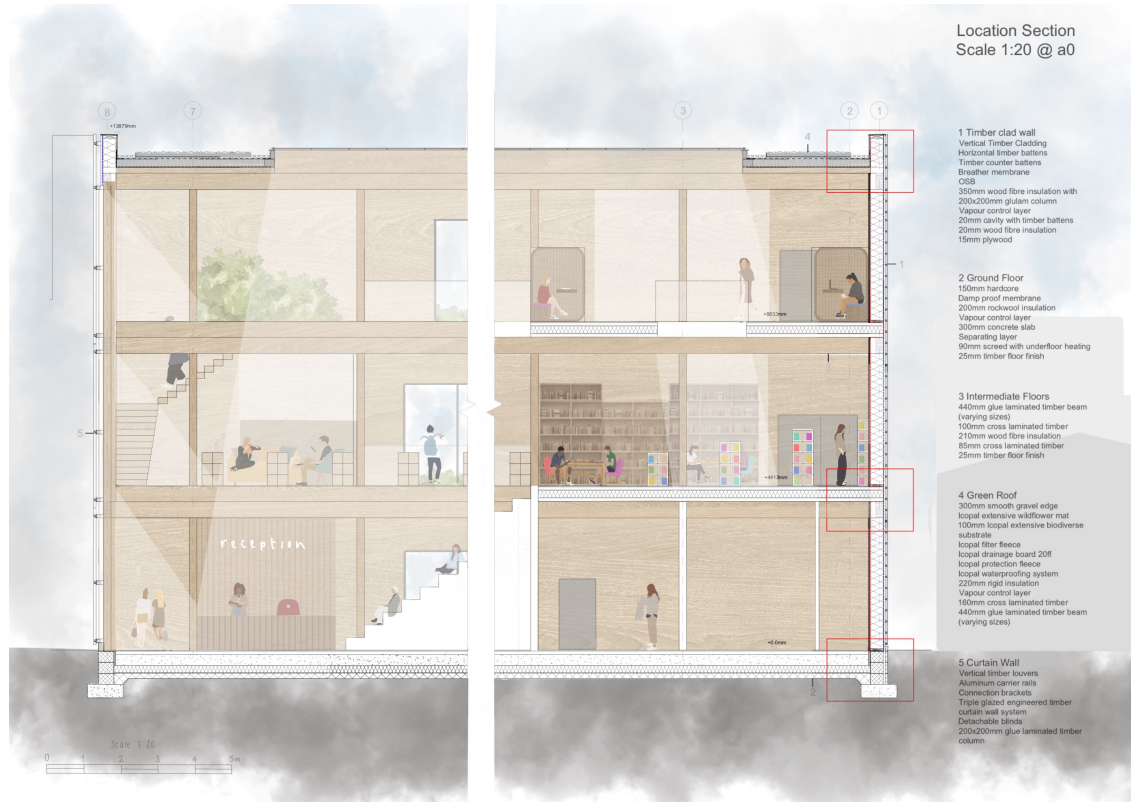


interior views



accessible | varied study environments | welcoming | calming | gathering spaces | open
plan | indoor outdoor connections | captured views | distraction free

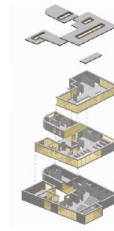
sustainability



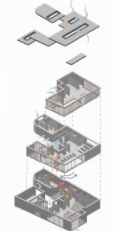
carbon



light



air



heat



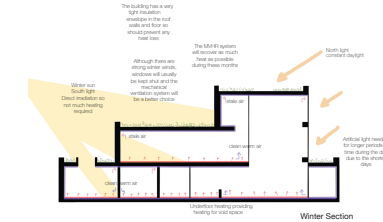
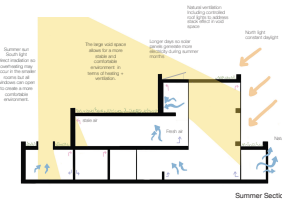
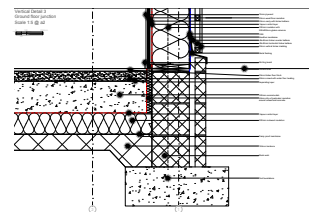
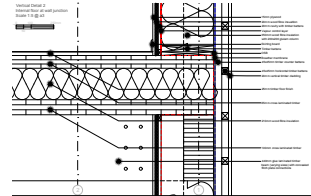
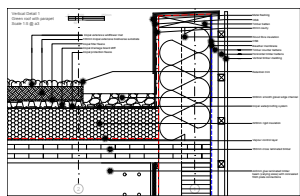
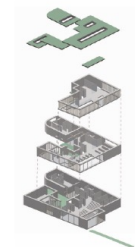
power



water



landscape



materials

